

1 **Alien genes introgression and development of alien monosomic addition lines**  
2 **from a threatened species, *Allium roylei* Stearn, to *Allium cepa* L.**

3

4 Hoa Q. Vu<sup>1</sup>, Yasuyuki Yoshimatsu<sup>2</sup>, Ludmila I. Khrustaleva<sup>3</sup>, Naoki Yamauchi<sup>1, 2</sup>, and  
5 Masayoshi Shigyo<sup>1, 2, \*</sup>

6

7 <sup>1</sup>The United Graduate School of Agricultural Sciences, Tottori University, 4-101  
8 Koyama-Minami, Tottori 680-8553, Japan; <sup>2</sup>Faculty of Agriculture, Yamaguchi  
9 University, 1677-1 Yoshida, Yamaguchi 753-8515, Japan; <sup>3</sup>Timiryazev Agricultural  
10 Academy, Timiryazev Street 44, Moscow, Russia; \*Corresponding author, E-mail:  
11 shigyo@yamaguchi-u.ac.jp

12

13

14

15

16

17

18

19

20

21

22

23

1 **Abstract** To produce alien monosomic addition lines (AMALs) of *Allium cepa* (genomes  
2 CC,  $2n=2x=16$ ) carrying extrachromosomes from *Allium roylei* (RR,  $2n = 2x = 16$ ),  
3 reciprocal backcrossing of allotriploids ( $2n = 24$ , CCR) with diploids ( $2n = 16$ , CC) and  
4 selfing of a single allotriploid were carried out. The chromosome numbers in the BC<sub>2</sub>F<sub>1</sub>  
5 and BC<sub>1</sub>F<sub>2</sub> progenies ranged from 16 to 32. Forty-eight plants were recorded to possess  
6  $2n = 17$  among a total of 169 plants in observation. Through the analyses of isozymes,  
7 expressed sequence tag (EST) markers, and karyotypes, all eight possible types of *A.*  
8 *cepa* - *A. roylei* monosomic addition lines (CC+1R - CC+8R) could be identified. Seven  
9 types of representative AMALs (without CC+2R) were used for the GISH analysis of  
10 somatic chromosomes. Except for CC+6R, all AMALs showed an entire (unrecombined)  
11 extrachromosome from *A. roylei* in the integral diploid background of *A. cepa*. A single  
12 recombination between *A. cepa* and *A. roylei* was observed on the extrachromosome in  
13 the remaining type. All alloplasmic AMALs possessing *A. roylei* cytoplasm showed high  
14 or complete pollen sterility. Only the autoplasmic CC+4R with *A. cepa* cytoplasm  
15 possessed relatively high pollen fertility. The bulbs of CC+4R displayed the distinct  
16 ovoid shape that discriminates them from spherical or oval ones in other AMALs. Downy  
17 mildew screening in the field showed higher resistance in *A. roylei*, a hypo-allotriploid  
18 (CCR-nR,  $2n = 23$ ), and an allotriploid (CCR,  $2n = 24$ ). Meanwhile, no complete  
19 resistance was found in some AMALs examined. This was the first trial toward the  
20 establishment of a complete set of *A. cepa* - *A. roylei* monosomic additions.

21

22

23

## 1 **Introduction**

2

3 *Allium cepa* L. is one of the most economically important species in the section *Cepa* of  
4 the genus *Allium* (Brewster 2008). It contains two main groups: the Common onion group  
5 and the *Aggregatum* group. The Common onion group includes the bulb onion, which is  
6 the most important *Allium* vegetable crop grown worldwide, with a long cultivation  
7 history dating back to approximately 3200 B.C. (McCollum 1976). Meanwhile, the  
8 shallot is the most important vegetable and spice crop of the *Aggregatum* group (Fritsch  
9 and Friesen 2002) and is cultivated mainly in low-latitude areas (Siemonsma and Piluek  
10 1993). Up to now, onion breeding has focused on the F<sub>1</sub> hybrid seed production in most  
11 parts of the world because of its many favorable characteristics, such as male sterility,  
12 resistance to bolting and bulb splitting, high yield, and multiple types of bulb shapes and  
13 skin colors (Dowker 1990). On the contrary, crossbreeding of the shallot has been poorly  
14 examined because of its main propagation system based on division. Most probably, *A.*  
15 *cepa* itself does not carry resistance genes against modern diseases and pests or other  
16 interesting traits, e.g., a vigorous rooting system (Shigyo and Kik 2008). The exploitation  
17 of wild species through interspecific hybridization has, therefore, been recommended  
18 for introducing novel characteristics, especially those that are limited in the *A. cepa* gene  
19 pool (Kik 2002).

20 Researchers are now interested in *Allium roylei* with a potential gene reservoir, as this  
21 wild species proved to be completely resistant to downy mildew (*Peronospora*  
22 *destructor*) (Kofoet et al. 1990) and partially resistant to leaf blight (*Botrytis squamosa*)  
23 (De Vries et al. 1992b) and *Fusarium* basal rot (Galván et al. 2008). This species is

1 considered as a species from the primary (Shigyo and Kik 2008) or secondary (Shigyo  
2 2007) gene pool of *A. cepa* based on the gene pool concept proposed by Harlan and De  
3 Wet (1971). Interspecific hybrids between *A. roylei* and *A. cepa* and its backcrosses to *A.*  
4 *cepa* were first recorded by Van der Meer and De Vries (1990). In a study involving a  
5 crossing experiment, only a slight isolation barrier was found between *A. cepa* and *A.*  
6 *roylei* (Van Raamsdonk et al. 1992). A close relationship between these two species was  
7 also demonstrated by meiotic observations of their F<sub>1</sub> hybrid (De Vries et al. 1992a).  
8 Furthermore, *A. roylei* could be used as the bridging species to introduce the genes from  
9 *A. fistulosum* into *A. cepa* genomes (Khrustaleva and Kik 2000). Using the tri-hybrid  
10 population derived from this bridge-cross, Galván et al. (2011) recently found two  
11 quantitative trait loci (QTLs) from *A. roylei* located on chromosomes 2 and 3 contributing  
12 to mycorrhizal response. Vu et al. (2011) reported the substitution of *A. roylei* cytoplasm  
13 for the production of novel alloplasmic male sterile lines in *A. cepa* via the use of their  
14 amphidiploid.

15 An alien monosomic addition line (AMAL), which is a line with an extrachromosome  
16 from a related species, can improve the process of genetic introgression from donor  
17 species into recipient species through the production of chromosome substitution and  
18 translocation lines (Singh 2003). In *Allium*, a combination of *A. fistulosum* and *A. cepa*  
19 has been reported for AMAL production (Peffley et al. 1985; Shigyo et al. 1996; Hang et  
20 al. 2004a). The AMALs of *Allium* crops could be used as the tools for the chromosomal  
21 assignment of several morphological characteristics (Shigyo et al. 1997b) and  
22 phytochemical phenotypes (Shigyo et al. 1997a; Hang et al. 2004b; Dissanayake et al.  
23 2008; Yaguchi et al. 2008, 2009a, b; Masamura et al. 2011) as well as the assignment of

1 linkage groups in the donor species on its specific chromosomes (Van Heusden et al.  
2 2000b; Martin et al. 2005; Tsukazaki et al. 2008, 2011). On the other hand, an increment  
3 of the combination number for AMAL development seems to provide effective  
4 alternatives to extend the genetic variability of cultivated *Allium* species. In a previous  
5 study (Vu et al. 2011), a successful result was reported in the backcrossing of *A. cepa*  
6 diploid (genomes CC) with *A. cepa* - *A. roylei* allotriploid (CCR,  $2n=3x=24$ ). Plenty of  
7 hyper-diploid plants with  $2n = 17$ , which may possess an alien extrachromosome from *A.*  
8 *roylei*, could be observed in the BC<sub>2</sub> progeny derived from this cross combination. The  
9 aims of the present study were to select a complete set of *A. cepa* - *A. roylei* monosomic  
10 addition lines from the BC<sub>2</sub> progeny via the use of molecular marker and cytogenetic  
11 techniques and to find some favorable agronomic traits such as male sterility or downy  
12 mildew resistance in this set.

13

## 14 **Materials and methods**

15

### 16 Crossing procedure for production of monosomic addition lines

17

18 The plant materials were *A. roylei* (RR,  $2n = 2x = 16$ ) and two groups of *A. cepa* (CC,  $2n$   
19  $= 2x = 16$ ): shallot (Aggregatum group) and bulb onion (Common onion group). In a  
20 previous study, a capital letter “A” was used to indicate the shallot chromosome (Shigyo  
21 et al. 1996). However, the “C” used for the onion chromosomes can also be used for  
22 those of shallot (De Vries 1990). Therefore, a capital “C” was used for both shallot and  
23 bulb onion chromosomes in this study. To produce *A. cepa* - *A. roylei* monosomic

1 addition lines, an interspecific F<sub>1</sub> hybrid was obtained from a cross between *A. roylei*  
2 ‘97175’ and shallot ‘86208’ at first (Fig. 1). After doubling the chromosomes of the  
3 clones derived from this single F<sub>1</sub> hybrid, two amphidiploids (plant codes: ‘28-1’ and  
4 ‘33’, CCRR,  $2n = 4x = 32$ ) were obtained. These two amphidiploids (as seed parents)  
5 were backcrossed with a late bolting bulb onion unknown variety, ‘Banchusei’, and an  
6 asexually propagated shallot clone, ‘Chiang Mai’ (as pollen parents), to produce BC<sub>1</sub>  
7 progenies as allotriploids (CCR,  $2n = 3x = 24$ ), i.e., ‘CM26’ and ‘CM23’, respectively.  
8 Backcrosses with *A. cepa* or selfings were made to obtain BC<sub>2</sub> or BC<sub>1</sub>F<sub>2</sub> populations that  
9 were named as BR, SR, RB, and SY (see Fig. 1). The parts surrounded by the frame in  
10 this figure were carried out in this study. All processes of the crossings and raising  
11 seedlings were carried out according to Vu et al. (2011).

12

### 13 Chromosome observation and karyotype analysis

14

15 All plants of BR, SR, RB, and SY lines were used to determine chromosome number.  
16 Somatic chromosomes of root tips were observed by Feulgen nuclear staining followed  
17 by the squash method. The karyotype analyses were according to the standard  
18 nomenclature system for the chromosome of *Allium* (Kalkman 1984), which was  
19 generally agreed upon at the Eucarpia 4th *Allium* Symposium (De Vries 1990).

20

21

22

23

1 Characterization of alien chromosome based on isozyme and EST markers

2

3 Chromosome constitutions of the plants in BC<sub>2</sub> and BC<sub>1</sub>F<sub>2</sub> progenies, which possess the  
4 chromosome number  $2n = 17$ , namely alien monosomic addition lines (AMALs), were  
5 further characterized using isozyme and EST markers. Van Heusden et al. (2000b)  
6 reported that isozyme loci *Lap-1*, *Pgm-1*, and *Pgi-1* are respectively located on 1R, 4R,  
7 and 5R in *A. roylei*. The characterization of extrachromosomes from *A. roylei* was,  
8 therefore, based on the analyses of these three isozyme loci. The extraction of enzymes,  
9 electrophoresis, and staining were carried out following the method of Shigyo et al.  
10 (1995a, b) and Van Heusden et al. (2000b).

11 Because there is a close genetic relationship between *A. roylei* and shallot, we  
12 assumed the chromosomal locations of ten EST markers in *A. roylei* from a  
13 homoeologous chromosome of the shallot chromosome to which the shallot allele  
14 corresponding to each of the markers had been assigned (Table 1). To find the  
15 chromosomal locations in *A. cepa* of the three specific markers CA4H, TC2418, and  
16 TC1088, the analyses of these markers were carried out in a complete set of *A. fistulosum*  
17 - shallot monosomic addition lines produced by Shigyo et al. (1996). For EST marker  
18 analyses of the *A. cepa* - *A. roylei* monosomic additions as well as the complete set of *A.*  
19 *fistulosum* - shallot monosomic additions, the total genomic DNA of the parental plants  
20 and AMALs was isolated from fresh leaf tissue using a mini-prep DNA-isolation method  
21 (Van Heusden et al. 2000a). The reaction mixture contains 20 ng template DNA, 1 x Ex  
22 buffer, 0.2 mM dNTPs, 0.5 μM forward primer, 0.5 μM reverse primer, and 0.25 units Ex  
23 *Taq* in a total volume of 10 μl. All PCRs were performed as follows: initial denaturation

1 for 3 min at 94°C and 35-40 cycles of PCR amplification (1 min denaturation at 94°C, 1  
2 min annealing at 60-79°C, and 1 min primer extension at 72°C) on a Program Thermal  
3 Cyclor iCycler™ (Bio-Rad, Hercules, CA, USA). The number of cycles in PCR  
4 amplification and the annealing temperature were optimized for each EST marker. The  
5 ramp times were carried out under default conditions with adjusted temperatures at the  
6 maximum ramp rate with minimum ramp time. The PCR products were separated by 2%  
7 agarose electrophoresis or 5% polyacrylamide gel electrophoresis (PAGE) according to  
8 the method of Yaguchi et al. (2009a). If they were monomorphic after denaturing PAGE,  
9 they were subjected to restriction analysis. Five microliters of PCR products was  
10 incubated for 24 h at 37°C in a total volume of 10 µl using 2 U of restriction enzyme and  
11 subsequently resolved by 2% agarose gel electrophoresis or PAGE. Restriction enzymes  
12 *AluI* (for the markers TC131, ACAHN07, and ACAHM36), *AfaI* (for CA4H and  
13 TC1088), *MboI* (for MSPS), *HinfI* (for TC2418 and DFR), and *TaqI* (for FLS) (Toyobo,  
14 Osaka, Japan) were used in an attempt to generate polymorphism between *A. cepa* and *A.*  
15 *roylei*. Three restriction enzymes *XspI* (for CA4H), *MboI* (for TC2418), *KpnI* (for  
16 TC1088) were used to reveal polymorphism between shallot and *A. fistulosum*.

17

#### 18 Bulb morphology assessment

19

20 After harvesting, the bulb morphologies of some lines in each of eight AMALs were  
21 evaluated. The maximum horizontal and vertical diameters of the bulbs were measured,  
22 bulb weights were recorded, and bulb colors were noted.

23



1 GISH analysis

2

3 The procedure of GISH analysis was according to the method of Khrustaleva and Kik  
4 (2000) with minor modifications.

5 Seven individual plants of *A. cepa* - *A. roylei* AMALs (CC+1R, +3R, +4R, +5R, +6R,  
6 +7R, and +8R) were used for GISH analysis. Total genomic DNA was extracted from 4 g  
7 of young leaves from shallot 'Chiang Mai' and *A. roylei* '97175'. The extracted DNA of  
8 *A. roylei* was labeled with digoxigenin-11-dUTP by a standard nick-translation protocol  
9 (Roche Diagnostics GmbH, Mannheim, Germany). The extracted DNA of shallot was  
10 used as a blocking DNA.

11 The hybridization mixture contained 50% (v/v) deionized formamide, 10% (w/v)  
12 sodium dextran sulfate, 10% (v/v) 20x SSC, 0.25% (w/v) SDS, 1 ng/μl digoxigenin-  
13 labeled DNA of *A. roylei*, and 0.06-0.08 μg/μl blocking DNA of shallot. Digoxigenin-  
14 labeled DNA was detected with anti-digoxigenin-FITC raised in sheep (Roche,  
15 Mannheim, Germany), then amplified with anti-sheep-FITC raised in rabbit (Vector  
16 Laboratories, Burlingame, USA), and finally amplified with anti-rabbit-FITC raised in  
17 goat (Vector Laboratories, Burlingame, USA).

18

19 Meiotic observation and pollen fertility test

20

21 Acetocarmine smears of pollen mother cells (PMCs) were used for meiotic studies. Fresh  
22 pollen grains were stained with 1% acetocarmine to observe their viability. The  
23 evaluation of pollen fertility was performed according to Shigyo et al. (1999). The pollen

1 fertility was checked during the first or second week after blooming of the first floret in  
2 each flower umbel.

3

4 Downy mildew screening in field

5

6 A test on downy mildew resistance for some AMALs and two multiple alien addition  
7 lines from RB lines was carried out in the experimental field of Takii & CO., LTD., in  
8 Konan City, Shiga Prefecture, Japan (N35°00', E136°05'). The bulbs were sown in pots,  
9 and germinated plants were then transplanted to the infected field in the beginning of  
10 October 2009. Spores were collected from the surface leaves of artificially inoculated  
11 plants with a fine paintbrush and suspended in distilled water with a final concentration  
12 of  $10^3$  spores/ml. A spore suspension was sprayed over the plants for six times in 2010  
13 (on 5, 17, and 23 March and on 5, 8, and 20 April). The first day of sporulation for each  
14 inoculated plant was recorded. Symptoms on plant leaves were observed in the field  
15 during the growing period.

16

## 17 **Results**

18

19 Production of alien monosomic addition lines

20

21 In backcrossing and selfing of allotriploids (CCR,  $2n = 24$ ) to produce BC<sub>2</sub> (RB, SY, and  
22 BR lines) and BC<sub>1</sub>F<sub>2</sub> (SR line), seed setting could be obtained and most of the seedlings  
23 survived (Table 2). All plants of BC<sub>2</sub> and BC<sub>1</sub>F<sub>2</sub> progenies were used for the

1 chromosome count. Their chromosome numbers are shown in [Table 3](#). The chromosome  
2 number of BC<sub>2</sub> plants varied from  $2n = 16$  to 24. On the other hand, in the BC<sub>1</sub>F<sub>2</sub>  
3 progeny, the chromosome number ranged from  $2n = 16$  to 32. In total, the highest  
4 frequency of plants was found with chromosome number  $2n = 16$  (110 plants), followed  
5 by  $2n = 17$  (48 plants). Other chromosome numbers,  $2n = 18, 19, 22, 23, 24, 28,$  and 32,  
6 were recorded with a low number of plants (one to three in each case). Finally, all 48  
7 plants recorded as  $2n = 17$  were used for further characterization of their chromosome  
8 constitution.

9

#### 10 Identification of alien monosomic additions

11

12 The analyses of karyotypes, isozymes, and EST genetic markers were carried out to  
13 identify the extrachromosomes of *A. roylei* in plants with  $2n = 17$  that had been produced.  
14 As the chromosome 6 of *A. roylei* showed the most distinctive sub-telocentric shape in its  
15 basikaryotype (Sharma and Gohil [2008](#)), the AMALs possessing this chromosome could  
16 easily be recognized by conventional karyotype analysis. However, the identification of  
17 the other AMALs by karyotyping was not always easy. Therefore, the chromosome  
18 constitutions of all AMALs were confirmed further by molecular markers. Every plant of  
19 48 AMALs was analyzed with at least one chromosome-specific marker (isozyme or EST  
20 markers) for each of eight different chromosomes derived from *A. roylei* (1R-8R).

21 The three isozymes could show the clear polymorphism between the parental lines [*A.*  
22 *cepa* (shallot and bulb onion) and *A. roylei*]. Therefore, they could be adopted for  
23 determining the presence of specific chromosomes of *A. roylei* in the BC<sub>2</sub> and BC<sub>1</sub>F<sub>2</sub>

1 progenies. The F<sub>1</sub> hybrid, amphidiploid, and allotriploid plants showed both bands of *A.*  
2 *roylei* and *A. cepa* for the locus *Lap-1* (Fig. 2a). An additional band at intermediate  
3 mobility between the parental bands was found for the locus *Pgi-1* (Fig. 2b). The  
4 summary of isozyme analysis in AMALs was included in Table 4. With the isozyme  
5 markers *Lap-1* and *Pgi-1* the AMALs CC+1R and +5R were characterized.

6 The three EST markers CA4H, TC2418, and TC1088 were, respectively, determined  
7 to be located on the chromosomes 1, 5, and 6 of *A. cepa* via the use of the complete set of  
8 *A. fistulosum* - *A. cepa* monosomic additions (Fig. 3). These three markers were,  
9 therefore, included in EST marker analyses for identification of extrachromosome in *A.*  
10 *cepa* - *A. roylei* monosomic additions in this study.

11 All EST markers, except for the SiR marker on chromosome 3, appeared as one  
12 single PCR product on 2% agarose gel in both *A. roylei* and *A. cepa*, and no  
13 polymorphism was detected. For the SiR marker, two PCR products were observed in *A.*  
14 *roylei*, from which the size of one product is distinguishable from one product of *A. cepa*.  
15 For the monomorphic markers, an interspecific polymorphism was generated using  
16 restriction enzymes to show polymorphisms between *A. cepa* and *A. roylei*. The DNA  
17 fragments derived from *A. roylei* were used to confirm the presence of *A. roylei*  
18 respective chromosomes (Fig. 4). The results of EST-marker analyses in AMALs were  
19 summarized in Table 4. All EST markers, except for TC1088, were present in one or  
20 more AMALs. Seven AMALs (CC+1R-5R and CC+7R-8R) were identified by EST  
21 markers. Although the marker TC1088 for chromosome 6 was not detected in any AMAL,  
22 two AMALs, RB82 and RB120, were determined to possess three sub-telocentric  
23 chromosomes (homoeologous chromosome group 6) by karyotype analysis. RB82,

1 however, also showed the presence of the marker for chromosome 7 of *A. roylei*, and its  
2 chromosome constitution was determined as unidentified. RB120 was confirmed by the  
3 following GISH analysis. [Figure 5](#) shows representative somatic metaphase  
4 chromosomes of a complete set of AMALs.

5 Finally, this study demonstrated that the production of a complete set of AMALs was  
6 not impossible in the species combination of *A. cepa* (recipient) and *A. roylei* (donor).  
7 The chromosome constitutions of 13 plants could not be identified due to the absence of  
8 all markers (11 plants) or the presence of more than one different chromosome-specific  
9 markers (two plants). Among AMALs of both RB and SY lines, the highest frequency of  
10 plants was found in CC+8R (RB: 34%, SY: 38%), followed by CC+7R (13%, 25%) and  
11 CC+3R (8%, 13%). The other AMALs, CC+1R, +2R, +5R, and +6R, appeared with  
12 lower percentages. All eight possible AMALs, except for CC+4R, were obtained in RB  
13 and SY lines. However, one plant of CC+4R appeared in BR lines when the allotriploid  
14 was used as the pollen parent.

15

#### 16 GISH analysis of alien monosomic additions

17

18 The GISH analyses included seven individual plants, RB34, SY45, BR1, SY7, RB120,  
19 SY24, and RB66, which were determined previously through karyotype and molecular  
20 markers as AMALs CC+1R, +3R, +4R, +5R, +6R, +7R, and +8R, respectively ([Fig. 6a](#)).  
21 All types of the examined AMALs, except for CC+6R, showed an intact chromosome  
22 from *A. roylei* as a single chromosome addition with a complete set of 16 chromosomes  
23 from *A. cepa* without any translocation. This result confirmed the integrity of the

1 additional chromosome from *A. roylei* in each of these six AMALs. One exception,  
2 RB120, showed a single recombinant chromosome 6R' with segments derived from both  
3 *A. roylei* and *A. cepa* in an integral diploid back ground of *A. cepa*. The green  
4 fluorescence segment derived from *A. roylei* occupied the terminal half of the long arm of  
5 the chromosome 6R'.

6

7 Meiosis in alien monosomic additions

8

9 Five different AMALs derived from five individual plants comprising four plants of SY7  
10 (CC+5R), RB120 (CC+6R'), SY24 (CC+7R), and RB66 (CC+8R) that were previously  
11 used for GISH analysis and plant SY42 (CC+1R) were further investigated for their  
12 meiotic behavior during flowering time of 2011 (Fig. 6b). Meiosis of the AMALs CC+2R,  
13 +3R, and +4R was not observed because some plants of these lines did not develop  
14 flower stalks in this year, and the collection time of flower buds from the other plants was  
15 late to obtain PMCs at metaphase-I (MI). In the four AMALs, CC+1R, +5R, +7R, and  
16 +8R, a high percentage of PMCs at the MI of meiosis formed eight bivalents and one  
17 univalent; and the cells with seven bivalents and one trivalent also appeared, but with  
18 limited numbers ranging from 6.7 to 24.3% (Table 5). However, CC+6R' showed eight  
19 bivalents and one univalent or seven bivalents and one trivalent of chromosome 6 (Fig.  
20 6b), with the possibility of around 50% for each case (Table 5).

21

22

23

1 Pollen fertility of alien monosomic additions

2

3 A total of the 24 plants that came into bloom in the spring of 2007-2010 were checked for  
4 their pollen fertility (Table 6). All plants except BR1 (CC+4R) showed very low pollen  
5 fertility or completely sterility (0-4.3%). The CC+4R showed a 42.6% of the pollen  
6 fertility. This plant is an autoplasmic line derived from the cross when a bulb onion was  
7 used as a seed parent. Meanwhile, all other plants are alloplasmic lines carrying  
8 cytoplasm from *A. roylei*.

9

10 Bulb morphology of alien monosomic additions

11

12 Bulb characteristics including shape, color, and weight were investigated with several  
13 types of AMALs. Shallot showed spherical bulbs with purple outer scale, while *A. roylei*  
14 displayed ovoid bulbs and brown outer scale. Therefore, the introgression of single  
15 chromosome from *A. roylei* might actually alter the morphological features on bulbs in  
16 the recipient species. The bulb of BR1 (CC+4R) was distinct from the others and had an  
17 ovoid shape and brown skin color (Table 7, Fig. 6c). The bulbs of CC+2R, +3R, +5R,  
18 and +8R were spherical, whereas those of CC+1R, +6R', and +7R, were oval (Fig. 6c).  
19 The red purple color of the outer bulb skin was observed in CC+2R, +3R, +5R, and +7R.  
20 The other three AMALs, CC+1R, +6R', and +8R, were light purple. The heaviest bulb  
21 was found in CC+4R (Table 7).

22

23

1 Screening for downy mildew resistance

2

3 Fourteen plants of six AMALs [CC+1R (one plant), +3R (two), +4R (one), +5R (one),  
4 +7R (four), and +8R (five)], one plant of hypo-allotriploid, RB35 ( $2n = 3x-1 = 23$ , CCR-  
5 8R), and one plant of allotriploid, RB51 ( $2n=3x=24$ , CCR), were used to screen for  
6 resistance to downy mildew in the infected field (Table 8). The screening test for CC+2R  
7 and +6R were not carried out due to insufficient number of plant materials. Seven plants  
8 (one from CC+3R, four from CC+7R, and two from CC+8R) showed an early sporulation  
9 after the first inoculation of spores. Six other plants (one plant from CC+4R, one from  
10 CC+5R, two from CC+8R, and two from the allotriploids) showed a late sporulation after  
11 four cycles of inoculation. Furthermore, late sporulation (after six inoculation cycles) was  
12 observed in three remaining plants, each from the CC+1R, +3R, and +8R. However, after  
13 six cycles of inoculation, all plants of the AMALs had severe disease symptoms and died  
14 at the end of the growing period. On the other hand, light and moderate symptoms  
15 appeared in the hypo-allotriploid, RB35, and the allotriploid, RB51. These two lines  
16 could survive until a final phase.

17

## 18 **Discussion**

19

20 In diploid recipient species, AMALs had thus far been obtained in 20 different species  
21 combinations, including that of the present study (Singh 2003). However, all the possible  
22 types of AMALs were found in only eight cases, while, in others, a complete set was



1 lacking. The largest holders were *Beta* with three cases, *Allium* with two, and the  
2 remaining three species (*Lycopersicon*, *Nicotiana*, and *Oryza*) with one.

3 In *Allium*, Peffley et al. (1985) reported four types out of the *A. cepa* - *A. fistulosum*  
4 monosomic additions derived from a cross between allotriploid (seed parent) and bulb  
5 onion. They assumed that hyperploid zygotes or seedlings may possess a low survival  
6 rate, which resulted in few progeny plants with extrachromosomes. It was also difficult to  
7 complete eight possible shallot (*A. cepa* Aggregatum group) - *A. fistulosum* monosomic  
8 additions (Hang et al. 2004a). They suggested that the possible existence of deleterious  
9 alleles that are maintained in the heterozygous state remaining in shallot genomes may  
10 reduce the survival rate of progeny plants homozygous for these alleles. In this study, we  
11 produced *A. cepa* - *A. roylei* monosomic additions through three different cross  
12 combinations. In 2005, a pilot crossing, allotriploid CCR (♀) x bulb onion, had been  
13 carried out at first in an experimental field at Yamaguchi University (lat. 34°N, long.  
14 131°E), being less than successful due to an insufficient number of the obtained progeny.  
15 A sufficient number of the BC<sub>2</sub> progenies (RB and SY) could be surprisingly obtained in  
16 the same way for crossing at Hokkaido (44°N, 142°E) in 2006. This could be interpreted  
17 assuming that the seed and pollen fertilities of *A. roylei* and its derivatives vary  
18 considerably with latitude. Furthermore, AMALs appeared with obviously high  
19 frequency (28.8%) in these progenies. This result shows a good agreement with that of  
20 Peffley et al. (1985). Multiple crossings at high latitude regions seem to be a valid and  
21 feasible way to produce monosomic addition lines of *A. cepa* - *A. roylei* although those of  
22 *A. fistulosum* - shallot were not the case (Shigyo et al. 1996). On the other hand, all types  
23 of AMALs, excepting CC+4R, were developed from RB and SY. One possibility for the

1 absence of CC+4R is that a relatively low number of AMALs (46 plants) in RB and SY  
2 lines were produced. Actually, we could find the presence of chromosome 4R via *Pgm-1*  
3 marker in some multiple addition lines (2n=19, 22, 23, 24) of BC<sub>2</sub> plants in RB and SY  
4 (data not shown). In addition, it is well possible that the appearance frequency differs  
5 between chromosomes. Shigyo et al. (1996) reported that the appearance frequencies  
6 varied largely among eight types of *A. fistulosum* - shallot monosomic additions. The  
7 authors also suggested that the extrachromosomes might affect the survival of AMALs.  
8 While, one plant of CC+4R was obtained via a special cross combination between the  
9 bulb onion 'Sapporo-Ki' (seed parent) and the allotriploid. Therefore, the other  
10 possibility might be that the transmission rate of chromosome 4R through male gametes  
11 was higher than that through female gametes. The maternal transmission of alien  
12 chromosomes from a donor into a recipient is generally higher than the paternal one in  
13 many crops (Multani et al. 1994; Singh et al. 1998; Akaba et al. 2009). However, in some  
14 special cases, the preferential transmission through male gametes has been reported in  
15 some specific chromosomes of wild species, such as chromosome 5H<sup>L</sup> in the  
16 transmission from *Elymus trachycaulus* to common wheat (Jiang and Gill 1998) or  
17 chromosome 5R from rye to wheat (Efremova et al. 1996). To explain the phenomenon in  
18 our study, it is necessary to investigate the occurrence rate of CC+4R in a larger number  
19 of BC<sub>2</sub> plants from reciprocal backcrosses.

20 The modifications of morphological characteristics in AMALs are mostly due to the  
21 interaction between genes of the recipient and donor parents (Singh 2003). It has been  
22 reported that the traits of color, shape, and size of bulbs in *A. cepa* are quantitatively  
23 inherited (El-Shafie and Davis 1967; McCollum 1971). McCollum (1966) suggested the

1 genetic determiners of the bulb height and shape index (the ratio of bulb height to bulb  
2 diameter), which might be viewed as two measures of the same genetic traits. On the  
3 other hand, bulb diameter and bulb weight were affected by the environmental conditions.  
4 The distinct ovoid bulbs of CC+4R, resembling those of *A. roylei*, may suggest that some  
5 major genes related to this bulb feature are located on the chromosome 4 of *A. roylei* and  
6 interact with the genes in *A. cepa* genomes to define the final trait of this AMAL. Either  
7 way, it is possible to identify at least CC+4R morphologically. In this study, isozyme and  
8 EST markers, the chromosomal locations of which had been reported in *A. cepa* (Shigyo  
9 et al. [1995a, b](#); Martin et al. [2005](#); Masuzaki et al. [2006](#); McCallum et al. [2007](#); Yaguchi  
10 et al. [2008, 2009b](#)) and *A. fistulosum* (Yaguchi et al. [2009a](#)), were applied for the  
11 characterization of extrachromosomes from *A. roylei* in the AMALs. The result of marker  
12 analyses corresponded well with that of the karyotypic observation, except for TC1088  
13 which was not present in the translocation line CC+6R'. Three of the seven isozyme  
14 markers employed for the correspondence of paternal (*A. roylei*) and maternal (*A. cepa*)  
15 linkage groups in the previous study (Van Heusden et al. [2000b](#)) were presently used to  
16 identify *A. roylei* alien chromosomes in an *A. cepa* diploid background. The universal  
17 chromosome-specific markers in *Allium* could accurately detect the homoeologous  
18 chromosomes of *A. roylei* as well as the two cultivated species in alien addition lines. The  
19 six lines possessing each extrachromosome of 1R, 3R, 4R, 5R, 7R, and 8R were proven  
20 to be true AMALs through GISH. In these AMALs, the majority of PMCs showed  
21 preferential pairings between homologous chromosomes of *A. cepa*, leaving the  
22 chromosomes of *A. roylei* as univalent. On the other hand, the presence of trivalents  
23 between chromosomes of the two species in these lines showed a different phenomenon

1 from *A. fistulosum* - *A. cepa* monosomic additions reported by Shigyo (1997c), in which  
2 only bivalents and univalents were observed. This result suggested that *A. roylei*  
3 possesses a higher degree of homoeology with *A. cepa* than *A. fistulosum*. The  
4 translocation was observed in only one AMAL with a 6C-6R recombinant chromosome  
5 in the integral diploid background of *A. cepa*. The recombination point might have been  
6 located at the interstitial region. This translocation line probably resulted from chiasma  
7 formation among chromosome 6 of *A. cepa* and *A. roylei* during meiosis of the  
8 allotriploid 'CM23' used in backcrossing. This line showed nearly an equal rate of PMCs  
9 with the univalent and trivalent, suggesting that the recombinant chromosome 6C-6R has  
10 high homology with the chromosome 6C of *A. cepa*. In the present study, the integrated  
11 applications of the three different methodologies enabled us to clarify chromosomal  
12 constitutions of our AMALs.

13 In our previous study, a complete male sterility was recorded in diploid *A. cepa*  
14 harboring cytoplasm from *A. roylei* or alloplasmic lines (Vu et al. 2011). It was suggested  
15 that the sterility would be caused by incompatibility between the nuclear genomes of *A.*  
16 *cepa* and the cytoplasm of *A. roylei*. The data of this study would, therefore, indicate the  
17 effect of *A. roylei* cytoplasm on the pollen fertility of the AMALs. Tsutsui et al. (2011)  
18 newly found stable male sterility in alloplasmic AMALs of *Brassica rapa* carrying the  
19 cytoplasm and an extrachromosome from *Moricandia arvenis*. The probable presence of  
20 its fertility restoring gene could not be proved since all of the alloplasmic AMALs  
21 carrying cytoplasm from *A. roylei* showed an adequate level of male sterility. The  
22 restoring genes of pollen fertility were found in some specific types of alloplasmic  
23 *Moricandia arvenis* - *Raphanus sativus* monosomic additions (Bang et al. 2002) or in the

1 syntenic group 6 of alloplasmic *Brassica campestris* - *B. oxyrrhina* monosomic additions  
2 (Srinivasan et al. 1998). Relatively high pollen fertility was only found in the autoplasmic  
3 CC+4R, likely because of the lack of effect of the *A. roylei* cytoplasm. The direct  
4 introduction of the 4R chromosome to the alloplasmic line might be possible through a  
5 crossing with the CC+4R as a pollen parent. If a fertility-restoring gene existed on this  
6 chromosome, the restoration of pollen fertility would be clearly observed in the  
7 alloplasmic CC+4R.

8       The resistance of *A. roylei* to downy mildew (*P. destructor*) in greenhouse and field  
9 conditions is well-known (De Vries et al. 1992a). Recently, its resistance gene allocated  
10 on the chromosome 3 was transferred successfully into a bulb onion, and a disease-  
11 resistance test was carried out in a trial field in Europe (Scholten et al. 2007). In this  
12 study, we carried out the disease-resistance test under field conditions in Japan with *A.*  
13 *roylei* and the *A. cepa* - *A. roylei* chromosome addition lines. From the results of downy  
14 mildew screening, no complete resistance was found in any of the tested plants. In this  
15 study, even *A. roylei* showed the symptoms with sporulation on the leaves. This finding  
16 was irreconcilable with the results of the above two articles which reported a complete  
17 resistance in *A. roylei*. It has been reported that disease resistance in various plants is  
18 affected by environmental conditions as well as pathogen populations. In maize, the  
19 resistance inheritance to downy mildew (*Peronospora sorghi*) was affected not only by  
20 certain conditions (Williams 1984) but also by regions and pathogenic differences  
21 (Singburadom and Renfro 1982). As mentioned in a previous report (Schwartz 2008), a  
22 high-humidity environment, as in Japan, seems to be more favorable for downy mildew  
23 development than a relatively dry environment, as in Europe. One possible hypothesis for

1 this phenomenon is that the susceptibility was due to the severe condition of the disease-  
2 resistance test under high humidity at the field in Japan. In addition, Japanese fungal  
3 strains might be different from European ones. All the AMALs including those of  
4 CC+3R were completely susceptible. This result is in contrast to the result of Scholten et  
5 al. (2007) who used GISH to show that a single introgression of *A. roylei* on chromosome  
6 3 was enough for resistance to downy mildew. However, the light-to-moderate symptoms  
7 and the survival of *A. roylei*, the single deletion, and the multiple addition lines indicated  
8 that they had higher levels of resistance than those of all the tested AMALs. Among the  
9 AMALs, the plants of CC+1R (RB34), CC+3R (RB86), and CC+8R (RB85) may show  
10 higher resistance than those of the others, because they showed the latest sporulation.  
11 This result may indicate the existence of some genes responsible for disease resistance  
12 located on some chromosomes of *A. roylei*, which is in the contrast to the conclusion of  
13 previous studies that the resistance is based on one, dominant gene. Sabry et al. (2006)  
14 found that one locus on chromosome 2 of maize had a major effect and was associated  
15 with downy mildew resistance in all test environments. Moreover, they found two  
16 additional QTLs on chromosomes 3 and 9 of maize showing minor additive effects on  
17 resistance, but only in a specific environment. The present study would raise the question  
18 about whether the other genes exist on the other chromosomes of *A. roylei*, which might  
19 show additive effects with the resistance gene previously found on chromosome 3 under  
20 the field condition of Japan. Another issue that needs to be considered is the plants of the  
21 same AMAL type, such as CC+3R or CC+8R, showed different appearance of  
22 sporulation. One possibility might be derived from the discrete segregations of the

1 several genetic factors related to their resistibility in the diploid background of these two  
2 AMAL types.

3 In this study, a complete set of seven *A. roylei* whole chromosomes and one  
4 recombinant chromosome, 6C-6R, were added to *A. cepa*. Even when the completion of  
5 possible eight AMALs proves impossible, assignment of DNA markers to *A. roylei*  
6 chromosomes can be done using the DNA fingerprints of our incomplete set. This set  
7 would be helpful in the construction of a genetic map in *A. roylei*, which serves as the  
8 potential tool for its genetic studies. Furthermore, the complete set of AMALs is an  
9 invaluable material that makes it easier to localize loci responsible for the interested traits  
10 in breeding program, as the whole donor genome is divided into individual  
11 extrachromosomes adding to the genetic background of the recipient species. It, therefore,  
12 would enable rapid introgression of desired alien genes from *A. roylei*, a currently  
13 threatened species, into *A. cepa*.

14 At present, the set of AMALs has been maintained vegetatively in our laboratory. To  
15 avoid high risk of losing materials via vegetative propagation, it is essential to find a way  
16 of the permanent maintenance of our AMALs for future verification in several other  
17 institutes. Shigyo et al. (1998, 2003) reported that another useful method for maintaining  
18 a complete set of *A. fistulosum* - shallot monosomic additions was seed propagation via a  
19 combination of selfings and backcrossings AMALs (seed parent) x *A. fistulosum*. While,  
20 the transmission rates of extrachromosomes of *A. cepa* - *A. roylei* monosomic additions  
21 will show different trends from those of *A. fistulosum* - shallot monosomic additions. The  
22 detailed analyses of the transmission rates are underway to find the best maintenance

1 procedure of the novel *Allium* AMALs. In near future, it will be possible for us to provide  
2 the seed of the AMALs for scientists as well as breeders all around the world.

3

4 **Acknowledgments** We are grateful to Messrs. Atsuoki Sue, Takuji Yoshida, and Ryohei  
5 Suzuki (Takii & CO., LTD., Japan) for supplying us with valuable data of disease-  
6 resistance test. We also gratefully acknowledge the financial support of FY 2008  
7 Invitation Fellowship Program for Research in Japan (Short-Term) by Japan Society for  
8 the Promotion of Science which made it possible for Prof. Ludmila Khrustaleva to carry  
9 out molecular cytogenetic experiments at Yamaguchi.

10

#### 11 **References**

12

- 13 Akaba M, Kaneko Y, Ito Y, Nakata Y, Bang SW, Matsuzawa Y (2009) Production and  
14 characterization of *Brassica napus* - *Raphanus sativus* monosomic addition lines  
15 mediated by the synthetic amphidiploid “Raphanobrassica”. *Breed Sci* 59:109-118
- 16 Bang SW, Kaneko Y, Matsuzawa Y, Bang KS (2002) Breeding of *Moricandia arvenis*  
17 monosomic chromosome addition lines (2n=19) of alloplasmic (*M. arvenis*) *Raphanus*  
18 *sativus*. *Breed Sci* 52:193-199
- 19 Brewster JL (2008) Onions and Other Vegetable *Alliums*, 2nd edn. CABI, Wallingford
- 20 De Vries JN (1990) Onion chromosome nomenclature and homoeology relationship-  
21 workshop report. *Euphytica* 49:1-3



- 1 De Vries JN, Wietsma WA, Jongerius MC (1992a) Linkage of downy mildew resistance  
2 genes *Pd<sub>1</sub>* and *Pd<sub>2</sub>* from *Allium roylei* Stearn in progeny of its interspecific hybrid with  
3 onion (*A. cepa* L.). *Euphytica* 64:131-137
- 4 De Vries JN, Wietsma WA, de Vries T (1992b) Introgression of leaf blight resistance  
5 from *Allium roylei* Stearn into onion (*A. cepa* L.). *Euphytica* 62:127-133
- 6 Dissanayake PK, Yaguchi S, Yamauchi N, Shigyo M (2008) Using *Allium* alien  
7 monosomic addition lines to study chlorophyll degradation in stored Japanese  
8 bunching onion. *J Hortic Sci and Biotechnol* 83:388-394
- 9 Dowker BD (1990) Onion breeding. In: Rabinowitch HD, Brewster JL (eds) *Onion and*  
10 *allied crops, volume I. Botany, physiology and genetics*. CRC press, Boca Raton, pp  
11 215-232
- 12 Efremova TT, Maystrenko OI, Laykova LI (1996) Development of alien substitution  
13 lines of wheat with rye chromosome 5R. *Cereal Res Commun* 24:33-39
- 14 El-Shafie MW, Davis GN (1967) Inheritance of bulb color in the onion (*Allium cepa* L.).  
15 *Hylgardia* 38:607-622
- 16 Fritsch RM, Friesen N (2002) Evolution, domestication and taxonomy. In: Rabinowitch  
17 HD, Currah L (eds) *Allium crop science: Recent advances*. CABI Publishing,  
18 Wallingford, pp 3-30
- 19 Galván GA, Koning-Boucoiran CFS, Koopman WJM, Burger-Meijer K, González PH,  
20 Waalwijk C, Kik C, Scholten OE (2008) Genetic variation among *Fusarium* isolates  
21 from onion, and resistance to *Fusarium* basal rot in related *Allium* species. *Eur J Plant*  
22 *Pathol* 121:499-512

- 1 Galván GA, Kuyper TW, Burger K, Paul Keizer LC, Hoekstra RF, Kik C, Scholten OE  
2 (2011) Genetic analysis of the interaction between *Allium* species and arbuscular  
3 mycorrhizal fungi. *Theor Appl Genet* 122:947–960
- 4 Hang TTM, Shigyo M, Yamauchi N, Tashiro Y (2004a) Production and characterization  
5 of alien chromosome additions in shallot (*Allium cepa* L. *Aggregatum* group) carrying  
6 extra chromosome(s) of Japanese bunching onion (*A. fistulosum*). *Genes Genet Syst*  
7 79:263-269
- 8 Hang TTM, Shigyo M, Yaguchi S, Yamauchi N, Tashiro Y (2004b) Effect of single alien  
9 chromosome from shallot (*Allium cepa* L. *Aggregatum* group) on carbohydrate  
10 production in leaf blade of bunching onion (*A. fistulosum* L.). *Genes Genet Syst*  
11 79:345-350
- 12 Harlan JR, De Wet MJM (1971) Towards a rational classification of cultivated plants.  
13 *Taxon* 20:509-517
- 14 Jiang J, Gill BS (1998) Preferential male transmission of an alien chromosome in wheat.  
15 *J Hered* 89:87-88
- 16 Kalkman ER (1984) Analysis of the C-banded karyotype of *Allium cepa* L. Standard  
17 system of nomenclature and polymorphism. *Genetica* 65:141-148
- 18 Khrustaleva LI, Kik C (2000) Introgression of *Allium fistulosum* into *A. cepa* mediated by  
19 *A. roylei*. *Theor Appl Genet* 100:17-26
- 20 Kik C (2002) Exploitation of wild relatives for the breeding of cultivated *Allium* species.  
21 In: Rabinowitch HD, Currah L (eds) *Allium crop science: Recent advances*. CABI  
22 Publishing, Wallingford, pp 81-100

1 Kofoet A, Kik C, Wietsma WA, de Vries JN (1990) Inheritance of resistance to downy  
2 mildew (*Penorospora destructor* [Berk.] Casp.) from *Allium roylei* Stearn in the back-  
3 cross *Allium cepa* L. x (*A. roylei* x *A. cepa*). Plant Breed 105:144-149

4 Kuhl JC, Cheung F, Yuan Q, Martin W, Zewdie Y, McCallum J, Catanach A, Rutherford  
5 P, Sink KC, Jenderek M, Prince JP, Town CD, Havey MJ (2004) A unique set of  
6 11,008 onion expressed sequence tags reveals expressed sequence and genomic  
7 differences between monocot orders Asparagales and Poales. Plant Cell 16:114-125

8 Martin WJ, McCallum J, Shigyo M, Jakse J, Kuhl JC, Yamane N, Pither-Joyce M, Gokce  
9 AF, Sink KC, Town CD, Havey MJ (2005) Genetic mapping of expressed sequences in  
10 onion and in silico comparisons with rice show scant colinearity. Mol Gen Genomics  
11 274:197-204

12 Masamura N, Yaguchi S, Ono Y, Nakajima T, Masuzaki S, Imai S, Yamauchi N, Shigyo  
13 M (2011) Characterization of amino acid and S-alk(en)yl-L-cystein sulfoxide  
14 production in Japanese bunching onion carrying an extra chromosome of shallot. J Jpn  
15 Soc Hortic Sci 80:322-333

16 Masuzaki S, Shigyo M, Yamauchi N (2006) Complete assignment of structural genes  
17 involved in flavonoid biosynthesis influencing bulb color to individual chromosomes of  
18 the shallot (*Allium cepa* L.) Genes Genet Syst 81:255-263

19 McCallum J, Pither-Joyce M, Shaw M, Kenel F, Davis S, Butler R, Schever J, Jakse J,  
20 Havey MJ (2007) Genetic mapping of sulfur assimilation genes reveals a QTL for  
21 onion bulb pungency. Theor Appl Genet 114:815-822

22 McCollum GD (1966) Heritability and genetic correlation of some onion bulb traits:  
23 Estimates from S<sub>1</sub> offspring-on-parent regression. J Hered 57:105-110

- 1 McCollum GD (1971) Heritability of onion bulb shape and size: Estimates from half-sib  
2 families. *J Hered* 62:101-104
- 3 McCollum GD (1976) Onion and allies. In: Simmonds NW (ed) *Evolution of crop plants*.  
4 Longman, London, pp 186-190
- 5 Multani DS, Jena KK, Brar DS, Reyes de los BG, Angeles ER, Khush GS (1994)  
6 Development of monosomic alien addition lines and introgression of genes from *Oryza*  
7 *australiensis* Domin. to cultivated rice, *O. sativa*. *Theor Appl Genet* 88:102-109
- 8 Peffley EB, Corgan JN, Horak KE, Tanksley SD (1985) Electrophoretic analysis of  
9 *Allium* alien addition lines. *Theor Appl Genet* 71:176-184
- 10 Sabry A, Jeffers D, Vasal SK, Frederiksen R, Magill C (2006) A region of maize  
11 chromosome 2 affects response to downy mildew pathogens. *Theor Appl Genet*  
12 113:321-330
- 13 Scholten OE, Van Heusden AW, Khrustaleva LI, Burger-Meijer K, Mank RA, Antonise  
14 RGC, Harrewijin JL, Van Haecke W, Oost EH, Peters RJ, Kik C (2007) The long and  
15 winding road leading to the successful introgression of downy mildew resistance into  
16 onion. *Euphytica* 156:345-353
- 17 Schwartz HF (2008) Downy mildew. In: Schwartz HF, Mohan SK (eds) *Compendium of*  
18 *onion and garlic diseases and pests*, 2nd edn. APS Press, Minnesota, pp 32-35
- 19 Sharma G, Gohil RN (2008) Intrapopulation karyotypic variability in *Allium roylei* Stearn  
20 - a threatened species. *Bot J Linn Soc* 158:242-248
- 21 Shigyo M (1997c) Gene analyses of shallot (*Allium cepa* L. *Aggregatum* group) using a  
22 series of alien monosomic addition lines of Japanese bunching onion (*A. fistulosum* L.)

1 with extra chromosomes from shallot. Ph D. Thesis, Kagoshima University, Kagoshima,  
2 Japan.

3 Shigyo M (2007) *Allium*. In: Singh RJ (ed) Genetic resources, chromosome engineering,  
4 and crop improvement, vol. 3. CRC press, Boca Raton, pp 245-269

5 Shigyo M, Kik C (2008) Onion. In: Prohens J, Nuez F (eds) Hand book of plant breeding,  
6 Vegetables, vol II. Springer, Newyork, pp 121-159

7 Shigyo M, Tashiro Y, Isshiki S, Miyazaki S (1995a): Chromosomal locations of five  
8 isozyme gene loci (*Lap-1*, *Got-1*, *6-Pgdh-2*, *Adh-1* and *Gdh-1*) in shallot (*Allium cepa*  
9 L. *Aggregatum* group). *Jpn J Genet* 70, 399-407

10 Shigyo M, Tashiro Y, Isshiki S, Miyazaki S (1995b) Chromosomal locations of isocitrate  
11 dehydrogenase and phosphoglucosomerase gene loci in shallot (*Allium cepa* L.  
12 *Aggregatum* group). *Jpn J Genet* 70, 627-632

13 Shigyo M, Tashiro Y, Isshiki S, Miyazaki S (1996) Establishment of a series of alien  
14 monosomic addition lines of Japanese bunching onion (*Allium fistulosum* L.) with extra  
15 chromosomes from shallot (*A. cepa* L. *Aggregatum* group). *Genes Genet Syst* 71:363-  
16 371

17 Shigyo M, Tashiro Y, Iino M, Terahara N, Ishimaru K, Isshiki S (1997a) Chromosomal  
18 locations of genes related to flavonoid and anthocyanin production in leaf sheath of  
19 shallot (*Allium cepa* L. *Aggregatum* group). *Genes Genet Syst* 72:149-152

20 Shigyo M, Iino M, Isshiki S, Tashiro Y (1997b) Morphological characteristics of a series  
21 of alien monosomic addition lines of Japanese bunching onion (*Allium fistulosum* L.)  
22 with extra chromosomes from shallot (*A. cepa* L. *Aggregatum* group). *Genes Genet*  
23 *Syst* 72:181-186

- 1 Shigyo M, Iino M, Ino H, Tashiro Y (1998) Transmission rates of extra chromosomes in  
2 alien monosomic addition lines of Japanese bunching onion with extra chromosomes  
3 from shallot. J Jpn Soc Hortic Sci 68:18-22
- 4 Shigyo M, Iino M, Tashiro Y (1999) Fertility of alien monosomic addition lines of  
5 Japanese bunching onion (*Allium fistulosum* L.) with extra chromosomes from shallot  
6 (*A. cepa* L. Aggregatum group). J Jpn Soc Hortic Sci 68:494-498
- 7 Shigyo M, Wako T, Kojima A, Yamauchi N, Tashiro Y (2003) Transmission of alien  
8 chromosomes from selfed progenies of a complete set of *Allium* monosomic additions:  
9 the development of a reliable method for the maintenance of a monosomic addition set.  
10 Genome 46:1098-1103
- 11 Siemonsma JS, Piluek K (1993) Plant resources of South-East Asia No 8, Vegetables.  
12 Pudoc Scientific Publishers, Wageningen
- 13 Singburadom N, Renfro BL (1982) Heritability of resistance in maize to sorghum  
14 downy mildew (*Peronosclerospora sorghi* (Weston and Uppal) C.G. Shaw). Crop Prot  
15 1:323-332
- 16 Singh RJ (2003) Plant Cytogenetics. CRC Press, Boca Raton
- 17 Singh RJ, Kollipara KP, Hymowitz T (1998) Monosomic alien addition lines derived  
18 from *Glycine max* (L.) Merr. and *G. tomentella* Hayata: production, characterization,  
19 and breeding behavior. Crop Sci 38:1483-1489
- 20 Srinivasan K, Malathi VG, Kirti PB, Prakash S, Chopra VL (1998) Generation and  
21 characterisation of monosomic chromosome addition lines of *Brassica campestris* - *B.*  
22 *oxyrrhina*. Theor Appl Genet 97:976-981

- 1 Tsukazaki H, Yamashita K, Yaguchi S, Masuzaki S, Fukuoka H, Yonemaru J, Kanamori  
2 H, Kono I, Hang TTM, Shigyo M, Kojima A, Wako T (2008) Construction of SSR-  
3 based chromosome map in bunching onion (*Allium fistulosum*). Theor Appl Genet  
4 117:1213-1223
- 5 Tsukazaki H, Yamashita K, Yaguchi S, Yamashita K, Hagihara T, Shigyo M, Kojima A,  
6 Wako T (2011) Direct determination of the chromosomal location of bunching onion  
7 and bulb onion markers using bunching onion-shallot monosomic additions and  
8 allotriploid-bunching onion single alien deletions. Theor Appl Genet 122:501-510
- 9 Tsutsui K, Jeong BH, Ito Y, Bang SW, Kaneko Y (2011) Production and characterization  
10 of an alloplasmic and monosomic addition line of *Brassica rapa* carrying the cytoplasm  
11 and one chromosome of *Moricandia arvenis*. Breed Sci 61:373-379
- 12 Van der Meer QP, de Vries JN (1990) An interspecific cross between *Allium roylei*  
13 Stearn and *Allium cepa* L., and its backcross to *A. cepa*. Euphytica 47:29-31
- 14 Van Heusden AW, van Ooijen JW, Vrieling-van Ginkel R, Verbeek WHJ, Wietsma WA,  
15 Kik C (2000a) A genetic map of an interspecific cross in *Allium* based on amplified  
16 fragment length polymorphism (AFLP<sup>TM</sup>) markers. Theor Appl Genet 100:118-126
- 17 Van Heusden AW, Shigyo M, Tashiro Y, Ginkel RV, Kik C (2000b) AFLP linkage group  
18 assignment to the chromosomes of *Allium cepa* L. via monosomic addition lines. Theor  
19 Appl Genet 100:480-486
- 20 Van Raamsdonk LWD, Wietsma WA, de Vries JN (1992) Crossing experiments in  
21 *Allium* L. section *Cepa*. Bot J Linn Soc 152:533-544

- 1 Vu HQ, Iwata M, Yamauchi N, Shigyo M (2011) Production of novel alloplasmic male  
2 sterile lines in *Allium cepa* harbouring the cytoplasm from *Allium roylei*. *Plant Breed*  
3 130:469-475
- 4 Williams RJ (1984) Downy mildews of tropical cereals. *Adv Plant Pathol* 2:1-103
- 5 Yaguchi S, McCallum J, Shaw M, Pither-Joyce M, Onodera S, Shiomi N, Yamauchi N,  
6 Shigyo M (2008) Biochemical and genetic analysis of carbohydrate accumulation in  
7 *Allium cepa* L. *Plant Cell Physiol* 49:730-739
- 8 Yaguchi S, Hang TTM, Tsukazaki H, Vu QH, Masuzaki S, Wako T, Masamura N,  
9 Onodera S, Shiomi N, Yamauchi N, Shigyo M (2009a) Molecular and biochemical  
10 identification of alien chromosome additions in shallot (*Allium cepa* L. *Aggregatum*  
11 group) carrying extra chromosome(s) of bunching onion (*A. fistulosum* L.). *Genes*  
12 *Genet Syst* 84:43-55
- 13 Yaguchi S, Yamauchi N, Shigyo M (2009b) Single alien chromosome additions from  
14 shallot (*Allium cepa* L. *Aggregatum* group) increase endogenous polyphenol contents in  
15 Japanese bunching onion. *J Jpn Soc Hortic Sci* 78:431-435



Table 1. EST markers for identification of extrachromosomes from *A. roylei*

Primer set	GenBank accession No.	Forward and reverse primers	Chromosome	Reported	Restriction enzyme
CA4H	AY541032	5'-TCGGCAACTGGCTCCAAGTC-3' 5'-TGATTGACCAGTTCCGCTATGCC-3'	1	This study	<i>Afa</i> I
TC131	AY541031	5'-CCTGCAGAATGAGCTCATC-3' 5'-GAAGTTTCCGCCATGCAC-3'	2	Yaguchi et al. (2009b)	<i>Alu</i> I
ACAHN07	CF443350	Outside 5'-TTGATAACTCCAATGGGTGTAAATGTCC-3' 5'-ATCCTGCTTGGTATCAAGCGGCATGT-3' Inside 5'-GCAAAGAAAGGACTGCTTGTCAATGCT-3' 5'-ATTGCTCGGATCTCTGAGTCCATGTAG-3'	3	Kuhl et al. (2004)	<i>Alu</i> I
SiR	CF434863	5'-TGCAGCTCTTTCTCAAGTTGG-3' 5'-CAGAGCAGGACATGCCATAG-3'	3	McCallum et al. (2007)	- <sup>a</sup>
FLS	AY221247	5'-TTAAGGACGACCACTGGTT-3' 5'-CCACGACATCCGTGACT-3'	4	Masuzaki et al. (2006)	<i>Taq</i> I
TC2418	CF438524, CF438854	5'-CATCAGGAGAAGATATCAATGCTC-3' 5'-GCCTGTCTTCACTCCTAGTC-3'	5	This study	<i>Hinf</i> I
TC1088	CF451692, CF448264	5'-TAACGCCGTCAAACCTTACC-3' 5'-CTCGGTGGACAACCTTACC-3'	6	This study	<i>Afa</i> I
ACAHM36	CF443252	Outside 5'-TTCCTTGCTCAAGGATACGAGGATG-3' 5'-GATCATTTTCATCGTCATTTGCCCTCG-3' Inside 5'-GAAGAGAAGATGCTGGGGAATCTCG-3' 5'-GAGCAGATAGCTCTGCAGCACTCTG-3'	7	Martin et al. (2005)	<i>Alu</i> I
DFR	AY221250	5'-ACAGATGTACTTTGTGTCCA-3' 5'-GCTTCATCGAACATACTTTCC-3'	7	Masuzaki et al. (2006)	<i>Hinf</i> I
MSPS	EU164758	5'-GAAGGCTGATATTGTTGGTGAAG-3' 5'-TGTGTCGTAGGAGCCTGATG-3'	8	Yaguchi et al. (2008)	<i>Mbo</i> I

<sup>a</sup>No restriction enzyme was used

Table 2. Seed set, seed germination, and number of seedlings survival of allotriploids CM23 and CM26 (CCR) in backcrosses with bulb onion and selfing

Cross combination	Line	Number of seeds produced	Number of seeds that germinated	Number of seedlings that survived
CM23 x 'Kitami Kohai 39 go'	RB	178	130	127
CM23 x 'Sapporo-Ki'	SY	- <sup>a</sup>	52	52
'Sapporo-Ki' x CM26	BR	3	3	3
CM26 selfed	SR	11	6	6

<sup>a</sup>Not counted

Table 3. Frequency of chromosome numbers in BC<sub>2</sub> (BR, RB, and SY) and BC<sub>1</sub>F<sub>2</sub> (SR) progenies

Line	Number of plants observed	Frequency of plants								
		Chromosome number								
		16	17	18	19	22	23	24	28	32
RB	108	68	38	- <sup>a</sup>	-	-	1	1	-	-
BR	3	2	1	-	-	-	-	-	-	-
SR	6	2	1	-	-	1	-	-	1	1
SY	52	38	8	1	1	1	1	2	-	-
Total	169	110	48	1	1	2	2	3	1	1

<sup>a</sup>Not determined

Table 4. Identification of extrachromosomes in *A. cepa* - *A. roylei* monosomic addition lines via chromosome-specific isozyme markers (*Lap-1*, *Pgm-1*, and *Pgi-1*) and EST markers (the others)

Line	Group	Frequency of plants	<i>A. roylei</i> chromosome-specific genetic markers													Extrachromosome											
			(1R) <sup>a</sup>			(2R)			(3R)			(4R)			(5R)			(6R) <sup>b</sup>			(7R)			(8R)			
			<i>Lap-1</i>	CA4H	TC131	ACAHN07	SiR	<i>Pgm-1</i>	FLS	<i>Pgi-1</i>	TC2418	Karyotype	TC1088	ACAHM36	DFR		MSPS										
RB	1	1	1 <sup>c</sup>	- <sup>e</sup>	0	0	-	0	-	0	-	0	0	0	0	-	0	1R									
	2	1	0 <sup>d</sup>	-	1	0	-	0	-	0	-	0	0	0	0	-	0	2R									
	3	3	0	-	0	1	-	0	-	0	-	0	0	0	0	-	0	3R									
	4	1	0	-	0	0	-	0	-	0	-	1	0	0	0	-	0	5R									
	5	1	0	-	0	0	-	0	-	0	-	1	0	0	0	-	0	6R									
	6	5	0	-	0	0	-	0	-	0	-	0	0	1	0	-	0	7R									
	7	13	0	-	0	0	-	0	-	0	-	0	0	0	0	-	1	8R									
	8	1	0	-	0	0	-	0	-	1	-	0	0	0	0	-	1	Unidentified									
	9	1	0	-	0	0	-	0	-	0	-	1	0	1	0	-	0	Unidentified									
	10	11	0	-	0	0	-	0	-	0	-	0	0	0	0	-	0	Unidentified									
SY	1	1	-	1	0	-	0	-	0	-	0	-	0	-	0	0	0	1R									
	2	1	-	0	0	-	1	-	0	-	0	-	0	-	0	0	0	3R									
	3	1	0	0	0	-	0	0	0	1	1	-	0	-	0	0	0	5R									
	4	2	0	0	0	-	0	0	0	0	0	-	0	-	1	0	0	7R									
	5	1	-	0	0	-	0	-	0	-	0	-	0	-	0	1	0	8R									
	6	2	0	0	0	-	0	0	0	0	0	-	0	-	0	1	0	8R									
BR	1	1	-	0	0	-	0	-	1	-	0	-	0	-	0	0	0	4R									
SR	1	1	-	0	0	-	0	-	0	-	1	-	0	-	0	0	0	5R									

<sup>a</sup> The symbols inside parentheses show chromosome numbers of *A. roylei* on which the genetic markers are located

<sup>b</sup> Chromosome 6 was characterized by karyotype analysis

<sup>c</sup> Presence

<sup>d</sup> Absence

<sup>e</sup> Not conducted

Table 5. Chromosome configurations in PMCs at MI of *A. cepa* - *A. roylei* monosomic addition lines

AMALs	Plant code	No. of PMCs observed	Frequency of PMCs Chromosome pairing	
			8II + 1I	7II + 1III
CC+1R	SY42	40	33 (82.5) <sup>a</sup>	7 (17.5)
CC+5R	SY7	37	28 (75.7)	9 (24.3)
CC+6R'	RB120	41	21 (51.2)	20 (48.8)
CC+7R	SY24	30	28 (93.3)	2 (6.7)
CC+8R	RB66	30	26 (86.7)	4 (13.3)

<sup>a</sup>Numbers in parentheses indicate percentages

Table 6. Pollen fertility in *A. cepa* - *A. roylei* monosomic addition lines

Plant material	CC + extrachromosome	Plant code	Pollen fertility (%)								Average		
			2007		2008		2009		2010				
			1 <sup>st</sup>	2 <sup>nd</sup>	1 <sup>st</sup>	2 <sup>nd</sup>	1 <sup>st</sup>	2 <sup>nd</sup>	1 <sup>st</sup>	2 <sup>nd</sup>			
AMALs	CC+1R	SY42	<sup>a</sup>	-	-	-	-	-	-	0.0	0.0	0.0 ± 0.0	
	CC+2R	RB54	-	-	2.6	2.6	0.0	-	-	-	-	1.7 ± 0.9	
	CC+3R	RB62	-	-	0.0	0.0	-	-	-	-	-	0.0 ± 0.0	
		RB86	-	-	0.0	-	-	-	-	-	-	0.0 ± 0.0	
	CC+4R	BR1	-	-	42.6	-	-	-	-	-	-	42.6	
	CC+5R	RB109	-	-	0.0	0.0	-	-	-	-	-	0.0 ± 0.0	
	CC+6R'	RB120	-	-	0.0	0.0	-	-	-	-	-	0.0 ± 0.0	
	CC+7R	RB20	-	-	0.0	0.0	0.0	0.0	-	-	-	0.0 ± 0.0	
		RB58	-	-	15.8	1.0	0.1	0.3	-	-	-	4.3 ± 3.8	
		RB78	-	-	0.0	0.0	0.0	-	-	-	-	0.0 ± 0.0	
		RB81	6.2	-	0.4	4.3	0.0	0.0	-	-	-	2.2 ± 1.3	
		RB94	-	-	0.0	0.0	-	-	-	-	-	0.0 ± 0.0	
		CC+8R	RB4	-	-	0.2	0.0	0.3	0.0	-	-	-	0.1 ± 0.1
			RB18	-	-	-	-	0.8	0.1	-	-	-	0.5 ± 0.4
			RB42	-	-	0.0	0.0	0.5	0.0	-	-	-	0.1 ± 0.1
			RB61	-	-	-	-	0.0	-	-	-	-	0.0 ± 0.0
			RB65	-	-	-	-	0.0	0.0	-	-	-	0.0 ± 0.0
	RB66		-	-	0.0	0.0	2.7	0.0	-	-	-	0.7 ± 0.7	
	RB68	-	-	0.0	1.5	0.5	0.0	-	-	-	0.5 ± 0.3		
	RB85	-	-	0.0	0.0	0.0	-	-	-	-	0.0 ± 0.0		
RB96	-	-	-	-	0.0	0.0	-	-	-	0.0 ± 0.0			
RB100	-	-	0.0	0.0	-	-	-	-	-	0.0 ± 0.0			
RB114	-	-	0.0	0.3	0.0	-	-	-	-	0.1 ± 0.1			
RB117	1.3	3.5	0.0	0.0	0.0	-	-	-	-	1.0 ± 0.7			
<i>A. roylei</i> '97175'			-	-	23.0	-	-	-	-	-	-	23.0	
Shallot 'Chiang Mai'			-	-	93.7	-	-	-	-	-	-	93.7	
F <sub>1</sub> hybrid			-	-	0.2	-	-	-	-	-	-	0.2	
Allotriploid 'CM23'			-	-	0.3	-	-	-	-	-	-	0.3	
Allotriploid 'CM26'			-	-	11.5	-	-	-	-	-	-	11.5	

<sup>a</sup> Not observed

Table 7. Morphological characteristics of bulbs in *A. cepa* - *A. roylei* monosomic addition lines

AMALs	Number of lines observed	Number of plants	Bulb diameter (mm)	Bulb height (mm)	Bulb weight (grams)	Bulb diameter/bulb height	Bulb shape	Outer scale color
CC+1R	1	2	21.6	33.0	7.3	0.65	Oval	Light purple
CC+2R	1	2	34.9	33.0	20.9	1.05	Sphere	Red purple
CC+3R	3	9	29.2±3.8	28.4±1.5	5.3±0.5	1.04±0.03	Sphere	Red purple
CC+4R	1	2	38.6	60.8	43.4	0.63	Ovoid	Brown
CC+5R	1	4	29.7±1.9	28.2±0.9	13.0±2.3	1.05±0.04	Sphere	Red purple
CC+6R <sup>*</sup>	1	2	34.1	31.6	17.4	1.08	Sphere	Light purple
CC+7R	5	25	17.4±0.5	25.5±0.6	3.4±0.2	0.69±0.02	Oval	Red purple
CC+8R	10	36	27.0±0.8	29.5±0.7	9.5±0.6	0.92±0.03	Sphere	Light purple

Table 8. Downy mildew screening of *A. cepa* - *A. roylei* monosomic addition lines, hypo-allotriploid, allotriploid, and *A. roylei*

Plant materials	Chromosome constitution	Plant code	Days of first appearance of sporulation after first inoculation	No. of inoculation cycles before sporulation	Degree of symptom on leaves	Final evaluation	
AMALs	CC+1R	RB34	47	6	++ <sup>a</sup>	S <sup>d</sup>	
	CC+3R	RB62	11	1	++	S	
		RB86	47	6	++	S	
		BR1	32	4	++	S	
	CC+4R	BR1	32	4	++	S	
	CC+5R	RB109	32	4	++	S	
	CC+7R	RB58	11	1	++	S	
		RB78	4	1	++	S	
		RB81	11	1	++	S	
		RB94	11	1	++	S	
		CC+8R	RB42	32	4	++	S
			RB65 (2) <sup>f</sup>	32	4	++	S
			RB68	11	1	++	S
	RB85		47	6	++	S	
	RB96	4	1	++	S		
Hypo-allotriploid	CCR-8R	RB35 (2)	32	4	+ <sup>b</sup>	R <sup>e</sup>	
Allotriploid	CCR	RB51	32	4	+ <sup>-c</sup>	R	
<i>A. roylei</i>	RR	95001-3 (5)					
		95001-6 (5)					
		95001-10 (5)	47	6	+ <sup>- or +</sup>	R	
		95001-21 (5)					
		95001-24 (5)					
		97175-1 (2)					

<sup>a</sup> Severe symptom

<sup>b</sup> Moderate symptom

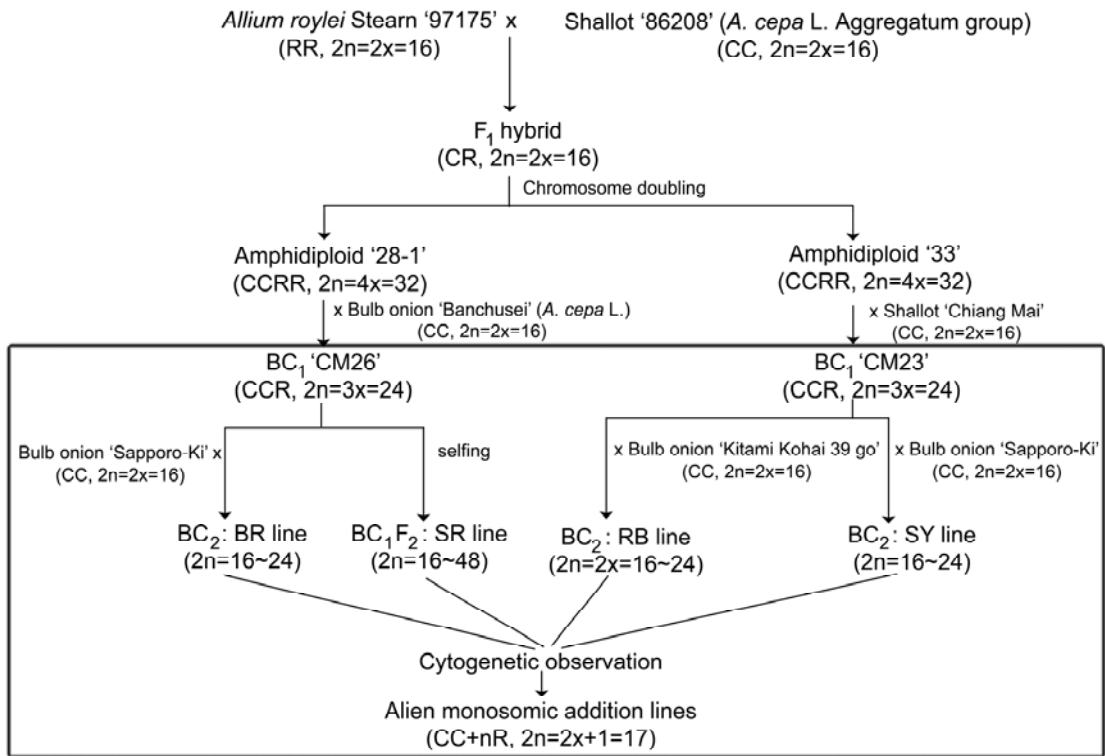
<sup>c</sup> Light symptom

<sup>d</sup> Susceptible

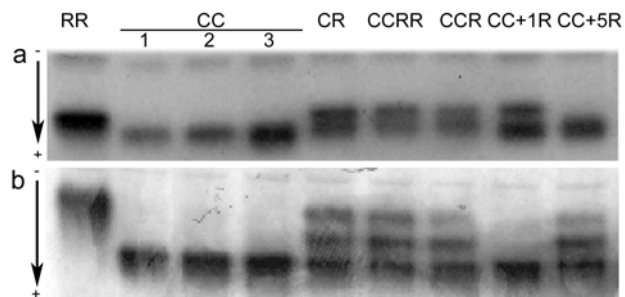
<sup>e</sup> Resistant

<sup>f</sup> Number of bulbs used

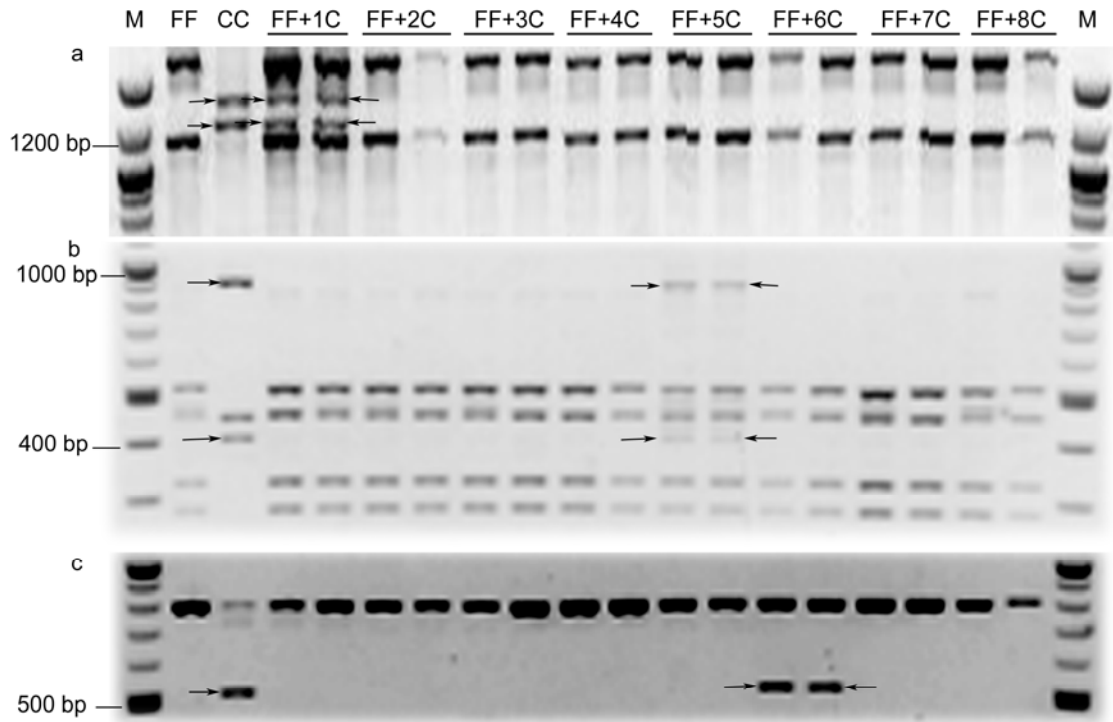




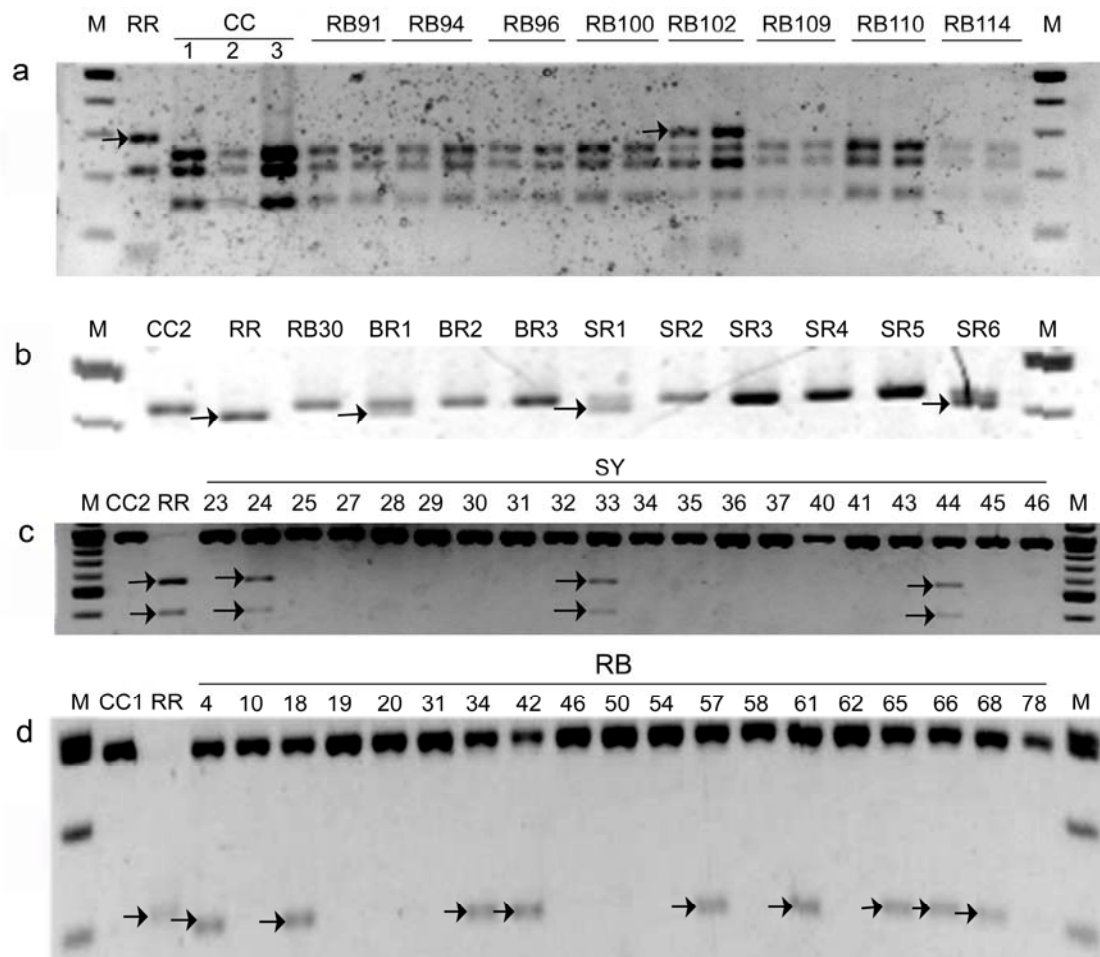
**Fig. 1** Method for producing alien monosomic addition lines of *A. cepa* with extrachromosomes from *A. roylei*



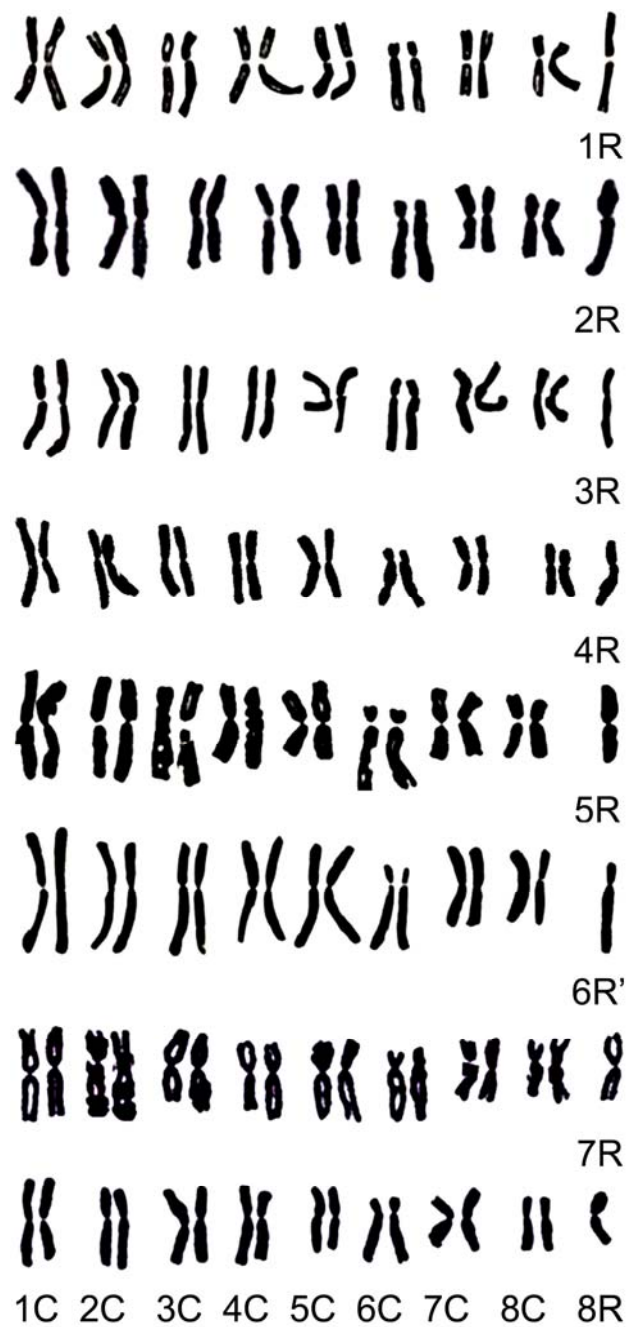
**Fig. 2** *Lap-1* (a) and *Pgi-1* (b) zymograms in *A. roylei* '97175' (RR), shallot '86208' (CC1), shallot 'Chiang Mai' (CC2), bulb onion 'Kitami Kohai 39 go'(CC3), F<sub>1</sub> hybrid (CR), amphidiploid '33' (CCRR), allotriploid 'CM23' (CCR), AMAL 'RB34' (CC+1R) and AMAL 'RB109' (CC+5R)



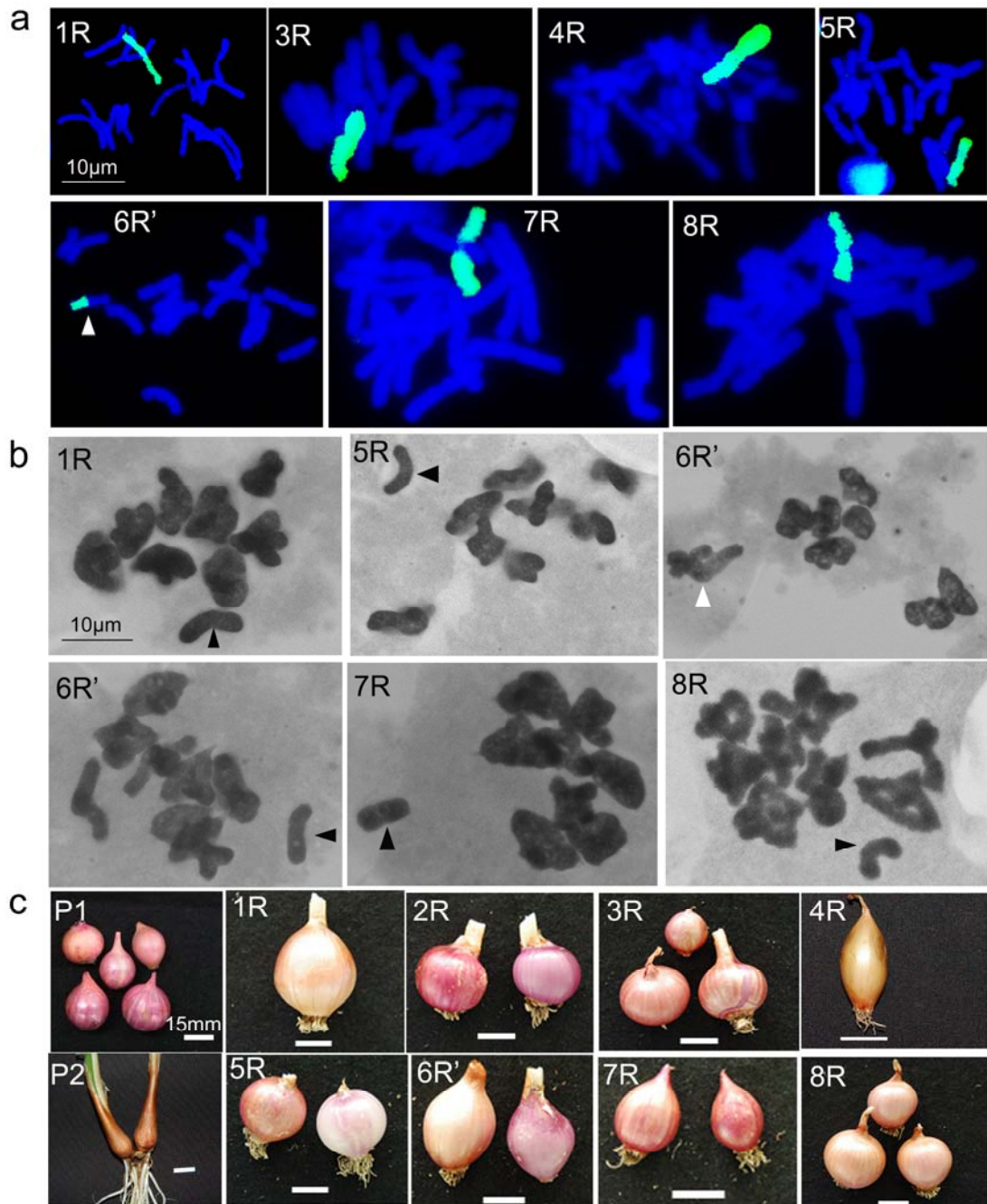
**Fig. 3** Representative PCR amplification profiles of EST markers CA4H (a), TC2418 (b) and TC1088 (c) after digestion by restriction enzymes on 2% agarose in *A. fistulosum* (FF), shallot 'Chiang Mai' (CC) and a complete set of *A. fistulosum* - shallot monosomic addition lines (FF+1C-FF+8C). Arrows indicate chromosome-specific markers of shallot. M molecular size marker (100bp ladder)



**Fig. 4** Representative PCR amplification profiles of the chromosome-specific EST markers ACAHN07 (3R) (**a**), FLS (4R) (**b**), DFR (7R) (**c**), and MSPS (8R) (**d**) after digestion by restriction enzymes on 2% agarose (**a-c**) and 5% polyacrylamide (**d**) in *A. roylei* '97175' (RR), shallot '86208' (CC1), shallot 'Chiang Mai' (CC2), bulb onion 'Kitami Kohai 39 go'(CC3), BC<sub>2</sub> (RB, SY and BR), and BC<sub>1</sub>F<sub>2</sub> (SR).. Arrows indicate chromosome-specific markers of *A. roylei*. M molecular size marker (100bp ladder)



**Fig. 5** Somatic metaphase chromosomes of eight different *A. cepa* - *A. roylei* monosomic addition lines (CC+1R, RB34; CC+2R, RB54; CC+3R, RB62; CC+4R, BR1; CC+5R, RB109; CC+6R', RB120; CC+7R, RB81; CC+8R, RB68)



**Fig. 6** **a** Somatic metaphase cells of seven types of *A. cepa* - *A. roylei* monosomic addition lines (1R, 3R, 4R, 5R, 6R', 7R, and 8R) after genomic in situ hybridization. *Arrow* indicates recombinant chromosome 6. **b** Chromosome pairings at MI in PMCs of five types of monosomic addition lines (1R, 5R, 6R', 7R, and 8R). *Black and white arrows* indicate univalent and trivalent, respectively. **c** Dormant bulbs of shallot (P1), *A. roylei* (P2) and a set of monosomic addition lines (1-5R, 6R', 7-8R)